



2020

40th Annual Meeting

*September
17-18 2020*

A Virtual Event



www.fabaworld.org

A picture perfect
opportunity with



Picture yourself at PBS Corp. where we are
committed to the clients and families we serve
and the TEAM who makes it all happen.

Here's a snapshot of what we offer:

Eligible to move up a salary tier every quarter
Retention Incentive Program
Health Insurance
Paid Time Off and Sick Leave
Paid Maternity Leave
Competitive Salaries

Paid Weekly
Professional Advancements
Opportunities to Transfer
Conference Bonuses
University Partnerships
Complimentary Live and Online CEUs
401K Retirement Options

At Team PBS, we believe in a culture of professional
development and collaboration through training,
mentorship and a wealth of resources.

BCBA and RBT are positions available right now!

Learn more about how we serve you,
so you can serve the families and clients who depend on PBS Corp.
Email a resume to analyst@teampbs.com or visit www.teampbs.com to apply online.

The Platform We Are Using for this Year's Conference is



What is BehaviorLive?

BehaviorLive is a live video platform used to host CEU events for Behavior Analysts. This is a place for you to join live events and connect with your community. Scroll down to learn how you can join and engage in BehaviorLive events, and take full advantage of the specialized features the platform has to offer!

Create an account

All users of the platform (both authors and consumers) need to have an account. Click the sign-up link at the top right corner of the page to create an account.

Join FABA 2020 Virtual Event

You can join the FABA event by going to <https://behaviorlive.com/faba/home>

From there select presentations. All of the presentations are listed in chronological order. When you find the event you want attend, click the title and you will be taken to the specific event.

If it is more than 20 minutes before the scheduled start time, you will see a button that says it is not yet time to join.

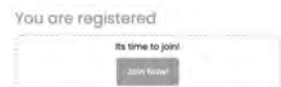
When it is time to join, the button will change to "Join Now". Once you move to the presentation screen, you may see a graphic that says "currently off air". Don't worry, once the presenter is ready to begin, this will go away.

Set up your Profile

Personalize your profile with a photo and brief bio, so other people know who you are! Head to <https://behaviorlive.com/account/profile> to update your BACB Certificate Number, bio and headshot. Note: You do not need to update your bio and headshot to use the BehaviorLive system, it is optional.

Check your Tech Setup

For best quality results, it's good practice to check that your technical setup (e.g. browser, wifi connection) meets BehaviorLive requirements before joining an event. If you're expecting to join the event host on screen, we recommend testing your audio/visual setup as well. Here's a helpful checklist to check your settings: <https://bit.ly/318mSUO>



Interact in an Event

Polls are located in a tab just below the video feed. Your host may add a poll prior to the event or during a live session, so be sure to check this area periodically.

Questions & Answers are located in a tab just below the video feed. This is where you can submit any questions directly to the presenters.

Chat is located to the right of the video feed. This is a great place to say hello and introduce yourself before the event goes live. Chat lets you directly communicate with the host and other attendees before, during, and after an event.

Missed the Event?

Don't worry! You can still watch the event for CEUs any time prior to October 15, 2020 (after that point FABAs reserves the right to archive the presentation). Just click the same event URL you used to register, or log into your account and go to My Courses.

How to Collect CEUs

CEUs during a live event are super easy. Just follow these steps:

1. During a live event that is eligible for CEUs, you will see the CEU tab at the bottom of the screen.
2. 4 Tokens will Appear on the TOP screen during the event and will stay up for 120 seconds (2 minutes)
3. During the presentation, click the CEUs box and enter each token when it comes in
4. When the event is complete, you can click "Complete Event" and get your certificate instantly.

NOTE: IF your certificate is missing your BACB number, you can go to "My Profile", add it, and re-generate your certificate.

Table of Contents

Executive Committee 6

Local Chapters of FABa 7

Meet Your 2020 FABa Executive Committee 8-10

Membership Info 12

Thursday Presentations 13-21

Friday Presentations 22-29



Executive Committee/Board Members

Amy Polick	<i>Executive Director</i>
Yulema Cruz	<i>President</i>
Andrew Houvouras	<i>Past-President</i>
Josh Pritchard	<i>President Elect</i>
Jon Bailey	<i>Treasurer</i>
Kerri Peters	<i>Secretary</i>
Nikki Dickens	<i>Program Committee Chair</i>
William Carlucci	<i>Member-at-Large</i>
Iser DeLeon	<i>Member-at-Large</i>
Tiki Fiol	<i>Member-at-Large</i>
Nicole Gravina	<i>Member-at-Large</i>
Kristin Myers-Kemp	<i>Member-at-Large</i>

FABA Committees

Program Committee

Leah Koehler	Iser DeLeon
Leigh Stehlik	William Carlucci
Kerri Peters	Brandon Perez

Observer Newsletter

Mary Burch (*Editor*)

Political Action Committee Members

Steve Coleman, Mary Riordan, Matt Potak, Yulema Cruz, Eric Prutsman

History Committee

Andrew Houvouras (*Chair*)

Diversity, Equity, and Inclusion (DEI) Committee

Marlesha Bell (*Chair*)

Local Chapters of FABa

ABAB- Association for Behavior Analysis of Brevard

Marta T. “Tiki” Fiol (President) tikifiol1@gmail.com

BAABA- Bay Area Association for Behavior Analysis

Matt Potak (President) behavioranalysis@gmail.com

CABA-Capitol Association for Behavior Analysis

Anne Perlman (President) aperlman@bmcsoutheast.com

ECABA-Emerald Coast Association for Behavior Analysis

Bruce Barger (President) bgb18b@my.fsu.edu

FCABA- First Coast Association for Behavior Analysis

Candy Hurst (President) candy@greatstridesrehab.com

GOABA- Greater Orlando Association for Behavior Analysis

Tina Yunis (President) Tyunis@brighterjourneys.com

NOWFABA- Northwest Florida Association for Behavior Analysis

Karen Reid (President) BEIABA@outlook.com

SCABA- Suncoast Association for Behavior Analysis

Kyla Walker (President) kyla4behavior@gmail.com

SOFABA- South Florida Association for Behavior Analysis

Michelle Castanos (President) mcastanos@southfloridabehavior.com

TCFABA- Treasure Coast Florida Association for Behavior Analysis

Paula Leonardo (President) pleonardo@behaviorbasicsinc.com



Meet Your 2020 FABA Executive Committee

YULEMA CRUZ, President

Dr. Yulema Cruz received a PhD in Education with a concentration in Applied Behavior Analysis from Nova Southeastern University. She is also a Board Certified Behavior Analyst-Doctoral with 19 years of experience in the field. Her academic interests include ethics and supervision in ABA, the latter of which was the topic of her dissertation. Besides from being an adjunct instructor for a couple of colleges and imparting classes in Spanish, Dr. Cruz is an ABA consultant and supervisor.

Additionally, she works in the development of supervision systems, and the dissemination of ABA to other countries and languages. Dr. Cruz also provides ethical advice in the area of supervision as part of the international <http://www.ABAethicshotline.com>. As FABAs President, she participates in the Program Committee, and co-chairs the Legislative and Political Action Committee.



ANDREW HOUVOURAS, Past-President

“Now, more than ever, we see how important a science of behavior is to bettering the human condition,” said Andrew. The Director of Experiential Training at Florida Tech’s School of Behavior Analysis, Andrew has been a FABAs member since 1998. A father, husband, surfer, and coach, he sees the principles of behavior come alive in every aspect of his life. “People struggle sometimes,” he stated, “myself included. It gives me hope seeing applied behavior analysis and FABAs continuing to grow and offer ways to reduce the struggles. I am so lucky to be a behavior analyst and a FABAs member.”



JOSH PRITCHARD, President-Elect

Dr. Pritchard earned his bachelor’s and master’s degrees from the Florida Institute of Technology, and his PhD in Behavior Analysis from the University of Nevada, Reno. He is currently a faculty member of the University of Central Florida, Orlando after having been the chair of the Florida Institute of Technology’s Hybrid program, and the Program Director of Southern Illinois University’s online degree program. Dr. Pritchard is the founder and owner of JKP Analysts and Lodestone Academy, and has also served as President of the Association for Science in Autism Treatment, on the Executive Council of the Association for Behavior Analysis International, President of the Tennessee Association for Behavior Analysis and was a member of the Supervision Task Force of the Behavior Analyst Certification Board.



NIKKI DICKENS, Past-President, Program Committee Chair

Emily N. Dickens, M.S., BCBA—or “Nikki”— is the Director of the FSU Early Childhood Autism Program in Panama City, a nonprofit clinic and community outreach organization. She received her Masters from FSU Panama City in 2005, returned in 2013 to oversee the ECAP practicum site, and is currently pursuing a doctorate from FSU. Previously, she was the Senior Behavior Analyst for the Developmental Disabilities Defendant Program in Chattahoochee, FL where she spent a decade working with adults facing felony charges. She has served as a Local Review Committee Chair and presented numerous times at the state and national level on the application of verbal operants in trial competency evaluations, the role of Behavior Analysts in forensic examinations, and barriers and challenges for newly certified individuals. Nikki previously served as a FABAs Member-At-Large, the 2018 FABAs President, and currently chairs both the FABAs Awards and Program Committees. She and her husband of 15 years have two beautiful daughters and one very chunky chihuahua.



Meet Your 2020 FABA Executive Committee

AMY POLICK is faculty at Florida State University and is the Associate Dean for Florida State University Panama City and Development Director for the FSU Early Childhood Autism Program (ECAP), which is a nonprofit ABA provider. She has been at FSU since 2010 and has served on the FABA executive committee since 2011. Dr. Polick has 15 years of clinical experience in ABA and her current passion is helping families affected by autism. Since joining ECAP, she has overseen annual fund-raisers for scholarships awarded to families for ABA services and has also led ECAP's expansion efforts, including the establishment of an on-campus autism clinic in 2012 and a Parent Resource Center which opened in the Fall of 2015.



JON S. BAILEY, Treasurer

Dr. Bailey is a BCBA-D, a Fellow of ABAI and APA, and is Treasurer and Media Coordinator for FABA, which he founded in 1980. He is an Emeritus Professor and has been on the faculty at Florida State University since 1970. He has published over 100 peer-reviewed research articles, is past-Editor of the Journal of Applied Behavior Analysis and is co-author of 11 books. Dr. Bailey received from APA Division 25, the Fred S. Keller Behavioral Education Award and the prestigious Nathan H. Azrin Award for Outstanding Contributions to Applied Behavior Analysis. In 2014 he received a Lifetime Achievement Award from FABA and in 2017 he received the FABA Outstanding Scientific Contributions to the Field of Behavior Analysis Award.



KERRI PETERS, Secretary, Member-At-Large, 2017-2020

Kerri P. Peters received her Masters degree in Behavior Analysis from the University of North Texas in 2007 and her PhD in Psychology from the University of Florida in 2013. She is currently the Clinical and Research Director of the University of Florida Behavior Analysis Research Clinic. Her primary area of research is applied behavior analysis, with emphases in the areas of developmental disabilities, the use of positive reinforcement in the classroom, skill acquisition and academic task completion, and parenting. Dr. Peters was the recipient of the Henry C. and Audrey S. Schumacher Fellowship demonstrating outstanding scientific promise, as reflected in the excellence of her dissertation. Dr. Peters currently serves as a Member at Large on the Florida Association for Behavior Analysis Executive Committee.



MARTA T. "TIKI" FIOL, Member- At- Large 2017-2020

Tiki has worked for children, adults, families and staffs for over 20 years. Currently she is the President of the Association for Behavior Analysis of Brevard and is also one of the Committee Co-Chairs for the Co-FABA Conferences. She completed her undergraduate degree in Psychology at University of Central Florida, and her graduate degree in Applied Behavior Analysis at Florida Institute of Technology. She is the President of Teaching Interventions Keeping Individuality, Inc. and also maintains her own caseload. Additionally, she is contracted with the State of Florida as an expert witness for Medicaid Fraud cases related to ABA. Tiki lives in Merritt Island, Florida with her wife Dana and their two sons, Jackson and Brantley. In her free-time she volunteers for Surfers for Autism or provides free training and parenting classes for local organizations in Brevard County.



continued on next page

Meet Your 2020 FABA Executive Committee

KRISTIN MYERS-KEMP, Member- At- Large 2018-2021

Dr. Kristin Myers-Kemp is an Assistant Professor at Florida Institute of Technology and executive team member at ABA Technologies, Inc. She received a Master of Science in applied behavior analysis from Florida Institute of Technology in 2005 and later return to complete a PhD in 2011. Kristin has experience in child welfare, parent training, treatment of problem behavior, and has been a co-instructor for the ABA Online Program at Florida Institute of Technology since 2007. Today, she is most passionate about curriculum design and training students in the science of behavior analysis. Kristin is an avid runner and lives in Indialantic, Florida with her husband and two children.



WILLIAM CARLUCCI, Member- At- Large 2018-2021

William "Bill" Carlucci began his career as a behavior assistant for individuals in foster care in 2002 following 2 years of volunteer work with individuals with Intellectual and Development Disabilities. William has worked in early intervention intensive behavioral group home settings, and a state inpatient psychiatric program. In 2009, William became a BCBA. From 2010-2016, he worked as a senior-area behavior analyst and LRC chair committee for the Agency for Persons with Disabilities in Volusia and Flagler counties. Soon after, William became a regional clinical training coordinator for Positive Behavior Supports Corporation, later moving into a lead position where he developed and supported other coordinators. Additionally, William has been a co-instructor for ABA Technologies since January of 2010.



ISER DELEON, Member- At- Large 2019-2022

Iser G. DeLeon earned his PhD at the University of Florida, where he is now Professor in the Department of Psychology. Dr. DeLeon has served the behavior analysis community in several roles including President of the Behavior Analyst Certification Board and Associate Editor for both the Journal of Applied Behavior Analysis and the Journal of the Experimental Analysis of Behavior. He is a Fellow of the Association for Behavior Analysis International (ABAI) and the 2020 recipient of the American Psychological Association (Division 25) Don Hake Translational Research Award. Dr. DeLeon's research has focused on assessment and treatment of problem behavior in persons with neurodevelopmental disorders, identification of preferences and determinants of choice, and translation of basic behavioral processes towards enhancing therapeutic and instructional outcomes.



NICOLE GRAVINA, Member- At- Large 2019-2022

Dr. Nicole Gravina is an Assistant Professor in the Department of Psychology at the University of Florida. She specializes in designing behaviorally-based workplace interventions that improve employee safety, healthcare delivery, and leadership. In addition to her faculty appointment, Nicole has consulted in a wide variety of industries including healthcare, human services, manufacturing, public utilities, insurance, and grocery distribution. She has published over 30 articles and book chapters and delivered over 100 presentations, trainings, and workshops. In 2019, she was honored with the APA Early Career Innovation Award in Consulting Psychology.



Save The Date

CoFABA Conference



Friday, May 14, 2021

UCF Fairwinds • Alumni Center, Orlando

Host Hotel:

Doubletree Orlando East – UCF

12125 High Tech Ave
Orlando, FL 32817
(407) 275-9000



Hosted by the Local Chapters of FABA (CoFABA)

Membership Information

Who Can Be a Member of FABA?

Membership is open to all persons interested in or actively engaged in teaching, research, and/or application of the principles and procedures of behavior analysis. Membership is not restricted to residents of the State of Florida.



Professional Behavior Analyst

This category is for any individual who is a BCBA, BCBA-D, BCaBA or FL CBA. If you hold any of these credentials you must pay dues as a Professional Behavior Analyst, and register for the conference as a professional behavior analyst. If you do not need to earn BA CEUs, and you hold one of the aforementioned certificates, you must still register as a professional, but you do not need to pay the CEU Flat Rate. Members in this group are full members, are eligible to vote and hold office. Dues for this category are \$50, regardless of education level.

Professional – Non-Behavior Analyst

This category is for everyone who is employed as a professional, but does not hold a certification granted by the Behavior Analyst Certification Board (BACB). This category includes Licensed Mental Health Counselors (LMHC), Psychologists & Psychiatrists (PSY), Social Workers, Speech and Language Pathologists (SLP) and Attorneys. These members are not eligible to earn BA CEUs but will be able to earn CEUs in other disciplines. Dues for this category are \$50.

Sustaining Member

Sustaining Members are members who are Professional Behavior Analysts (see above for description), but would like to pay greater dues as a show of financial support to the organization. Members in this group are full members, are eligible to vote and hold office. Sustaining Member dues are \$120 annually.

Paraprofessionals

This group is for paraprofessionals such as Animal Trainers, Registered Behavior Technicians, Line Therapists and School Professionals. Paraprofessionals cannot earn BA CEUs, vote in elections or hold office. Dues for this category are \$25 annually.

Student

This category is for any individual pursuing formal training in the discipline of behavior analysis but not yet gainfully employed therein. Proof of student enrollment must be provided in the form of a letter from the student's major professor or from the ABA program. Members in this category are non-voting and may not hold elective office. Student members are not eligible to earn CEUs. Dues for Students are \$25.

Parents

Parents of children who are recipients of behavioral services can register for this category to receive the parental discount for conference registration. Parents are not eligible to vote or hold office. Parents cannot receive CEU credits for attending the conference. Parent dues are \$25 annually.

Membership Year

For dues purposes, the membership year is September 1 to August 31. For practical purposes this means that when you register for the conference and pay your membership dues, you will be a member for that conference and the period of time until the next year's conference. Members who pay dues prior to January 1st may vote in the next year's election.

Thursday Presentations

8:00 - PATRICK C. FRIMAN, PhD, ABPP - 1.0 BACB CEU & 1.0 MH/PSY CEs

Dr. Patrick C. Friman received his PhD from the University of Kansas. He is the current Vice President of Behavioral Health at Boys Town and a Clinical Professor in the Department of Pediatrics at the University of Nebraska School of Medicine. He was formerly on the faculties of Johns Hopkins University, University of Pennsylvania, and Creighton University Schools of Medicine. He was also formerly the Director of the Clinical Psychology Program at University of Nevada. He is a Fellow of the Association for Behavior Analysis International, in three divisions of the American Psychological Association, and of the American Board of Behavioral Psychology. He is the former Editor of the Journal of Applied Behavior Analysis and former President of the Association for Behavior Analysis International. He has published more than 200 scientific articles and chapters and three books. The majority of his scientific and clinical work is in Behavioral Pediatrics and Behavioral Medicine. Dr. Friman's work in behavioral pediatrics has concentrated on the gap between primary medical care for children on one side, and referral-based clinical child psychological and psychiatric care, on the other. A secondary focus is on adolescent behavior and development. He also specializes in consultation regarding workplace issues such as motivation, dealing with difficult people, change, happiness and pathways to success.



Six Metaphysical Sources of Reinforcement

The word metaphysics has several definitions. The earliest and simplest is after or beyond physics. Aristotle wrote his noted treatise "Physics" first and subsequently wrote "The Metaphysics." The definition that best fits this talk is "lacking form or substance." It is no exaggeration to say that behavior analysts have given metaphysics, no matter how you define it, a wide berth. In this talk, I advocate a reconsideration. I will describe six potential sources of reinforcement all of which lack form and readily apprehensible substance. This is not to say that giving them form and identifying their substance is impossible. It is merely to say that their form and substance, at present, lack operational definitions. The purpose of this talk is not to provide the definitions, although it will provide some movement towards them. The purpose of the talk is to demonstrate that behavior analysts can and will consider subject matter that affects all human beings even though it does not lend itself readily to observation and measurement. The six sources are: 1) sense of certainty and control; 2) sense of uncertainty and lack of control; 3) sense of importance or significance; 4) the experience of love, connection, and intimacy; 5) the experience of growth; 6) acts of giving beyond oneself.

9:00 - JULIE SMITH, PhD - 1.0 BACB CEU & 1.0 MH/PSY CEs

Julie's hallmark is her astonishing ability to help leaders achieve "mission impossible." She is a world-class expert in applying behavior science to achieve unprecedented results in global companies. As co-founder of Alula (formerly CLG), Julie and her colleagues pioneered the most powerful and practical organizational behavior-change approach available today, as evaluated by multiple independent benchmark studies. Hundreds of client case studies prove that this approach leads to superior strategy execution and dramatic performance improvement.



Recently, Julie co-founded Performance Ally to create enterprise software that digitally enables everyone in an organization to excel at targeted Vital Behaviors to achieve 5-Star Results. This software, Ally Assist, optimizes human actions by providing realtime guidance, performance

continued on next page

Thursday Presentations *continued*

feedback, and barrier removal. The behavioral processes and tools embedded in Ally Assist help reduce behavior variability, speed execution, and sustain any improvement.

Making OBM Easier by Digitally Enabling Large-Scale Behavior Change

Only a tiny fraction of behavior analysts specializes in Organizational Behavior Management. Why is that? Because it is really hard to scale up the methods of individual behavior change to achieve meaningful results across an organization. Julie has spent her entire career figuring out how to do that reliably. She will showcase the internationally-recognized, behavior-based management system that she and her colleagues developed over the last 30 years. Then she will share how her team at Performance Ally is embedding that management system into Ally Assist™, enterprise software that will make it easier for customers, associates, and leaders to:

- Rapidly align around performance expectations.
- Artfully give and receive individualized feedback on Vital Behaviors.
- Bust through human performance barriers.
- Use performance dashboards to continuously improve.

Julie will demonstrate the key features and functions of this software. She will describe how this transformational software will not only establish OBM as a must-have management system in organizations of all types, but also make possible a rewarding career in OBM for behavior analysts who are interested in bringing about large-scale change.

10:00 - NOOR SYED, PhD, BCBA-D - 1.0 BACB CEU, ETH & 1.0 MH/PSY CEs

Dr. Noor Syed is a Professor of Practice and Clinical Director with Lehigh University Autism Services. She is a Board Certified Behavior Analyst- Doctoral (BCBA-D), Licensed Behavior Analyst (LBA), and a New York State certified general and special education teacher, birth through grade six. She completed her doctoral dissertation at Teachers College, Columbia University and has worked in the field of applied behavior analysis, autism, and developmental disabilities for over 10 years. Dr. Syed was chosen as a Top Tier International Partnership Discovery Fellow in the 2018 Inaugural Fellowship Class of the Global Autism Project and was previously an Assistant Professor of Special Education at Manhattanville College. Her research interests lie in verbal behavior, ethical practices in behavior analysis, and the implementation of behavior analysis to teaching.



The Ethics of Behavior Analysis in Schools: Collaboration, Tactics, & Tips

Interestingly, only 12.24% of BCBAs currently identify “Education” as their primary area of practice (BACB, n.d.), with a number of BCBAs reporting significant challenges in obtaining stakeholder buy-in with school personnel, in the modification of behavior analytic interventions to practice in schools, and management of potentially unethical caseloads, amongst other needs (Detrich et al., 2020; Syed & Bailey, personal communication, July 2020). BCBAs also report a lack of resources to guide in better ethical practices within a school setting. This discussion will focus on understanding common barriers behavior analysts encounter to achieving successful outcomes in schools, the role of behavioral frameworks such as multi-tiered systems of support (MTSS), contextual fit of behavioral strategies and applications of strategies to practice, as well as ethical approaches to engage in collaboration, leading to greater stakeholder buy-in, sustainability, and systems change. We will review tools and resources geared towards the application of behavior analysis in schools, and will discuss supervisory and oversight practices we might engage in to further the utilization of ABA in schools with novice behavior analysts in a sustainable manner.

Thursday Presentations *continued*

10:55 - MATTHEW NORMAND, PhD, BCBA-D - 1.0 BACB CEU & 1.0 MH/PSY CEs

Dr. Normand is a Professor of Psychology and Chair of the Psychology Department at the University of the Pacific. His primary scientific interests, broadly defined, are the application of basic behavioral principles to problems of social significance (including obesity and community health issues), verbal behavior, and the philosophy and methodology of science. He is the former Editor of *The Behavior Analyst*, a current Associate Editor for the *European Journal of Behavior Analysis*, former Associate Editor for the *Journal of Applied Behavior Analysis*, *The Behavior Analyst*, *The Analysis of Verbal Behavior* and *Behavior Analysis in Practice*, and he serves or has served on the editorial boards of *Behavioral Interventions*, *The Analysis of Verbal Behavior*, *Behavior and Philosophy*, and *Behavior Analysis: Research and Practice*. He also is a member of the Board of Directors of the Society for the Experimental Analysis of Behavior (SEAB). Dr. Normand is the 2011 recipient of the B. F. Skinner New Researcher Award from the American Psychological Association (Div. 25).



Get moving! A Programmatic Line of Behavioral Research on Physical Activity With Young Children.

Physical activity is an important component of a healthy lifestyle for children and adults. Conversely, physical inactivity is risk factor associated with a host of medical problems, including hypertension, Type 2 diabetes and, more generally, obesity. To mitigate these risks, current guidelines from the Centers for Disease Control and Prevention and World Health Organization state that children should engage in at least 60 minutes of MVPA per day. Unfortunately, recent estimates suggest that few children are this active. Various behavioral interventions have been developed to increase physical activity in children, but with mixed results. This talk will describe a programmatic line of research that begins with the validation of direct measurement strategies for MVPA, progresses to pre-intervention experimental analyses of the environmental variables functionally related to MVPA, then to intervention evaluations based on the outcomes of the pre-intervention analyses, and finally the development of group interventions for children in school settings. The results of these studies suggest that physical activity can be accurately measured, pre-intervention functional analyses can be used to identify specific variables that promote MVPA, and that this information can be used to develop interventions to increase MVPA.

12:00 - Practitioner Panel on CoVID - 1.0 BACB CEU 1.0

Lunch and Learn

Join us as we discuss how Covid 19 has impacted service providers, their staff and the individuals they serve. Our panel members include a Chief Operations officer for a company providing services in 17 states and Canada, several agency owners ranging from small providers to large providers delivery services in home and in clinic-based settings, and Clinical supervisors working in various arenas to include hospital settings. The diversity of our panel provides access to challenges for agencies operating in multiple states and addressing individual state requirements to agencies just starting out and the impact on recruitment of and maintaining staff and clients.

The panel will address the multiple issues and challenges revealed during Covid 19. Discussions will include the financial implications, issues related to HIPPA regarding staff and clients positive for Covid 19, barriers related to staffing, training on PPE for staff and clients, securing adequate PPE, resources accessed to address concerns, barriers encountered and solutions found to be effective. Panelists will also address protocols for staff, families and clients considered high risk.

continued on next page

Thursday Presentations *continued*

Chair: COREY L. ROBERTSON (*Florida Institute of Technology*, behaviorguy@gmail.com)

ANSLEY HODGES (*Florida Institute of Technology*, ahodges2013@my.fit.edu),

CLAIRE LOTTMAN (*Camen Behavioral Services, LLC*, clottman@camenbehavioral.com)

SHARON OLDER (*Adapt Behavioral Services*, solder@adapt-fl.com)

TAHRA CESSNA (*Positive Behavioral Supports Cooperation*, tcessna@teampbs.com)

CHRISTINA TUCKER, (*Strategies, Inc.*, crissylee29@gmail.com)

YAISY COSTALES SADE (*Sade Behavior Therapy, Inc.*, yaisysade@yahoo.com)

COREY ROBERTSON, MS, BCBA

Corey L. Robertson received his M.S. in Applied Behavior Analysis and Organizational Behavior Management from Florida Institute of Technology in 2006 and became a Board Certified Behavior Analyst in 2007. For the past 8 years, Corey has been dedicated to developing competent behavior analysts through his work as Lead Co-Instructor for FL Tech's online professional development program, and through direct and distance supervision of certificant seekers. He is also passionate about the growth and dissemination of the field through social media, serving as admin for several behavior analytic Facebook groups and maintaining the "behaviorguy" page and website.



SHARON OLDER, PhD, BCBA-D

Sharon has been the Executive Director of Adapt Behavioral Services since its inception in 2007. Prior to Adapt, she worked for several non-profit mental health agencies, a state hospital, and various other treatment agencies. She earned her doctorate in Clinical Psychology from West Virginia University in 1991. She has been a certified Behavior Analyst since 1991 and a Licensed Psychologist since 1992. She has been providing services for a variety of client populations since 1983 and directing treatment programs since 1991. She was the President of FABA from 2015-16 and served on the FABA Board for 7 years.



ANSLEY C. HODGES, PhD, BCBA

Ansley received a dual Bachelor of Arts in Deaf Education and Elementary Education from Flagler College and a Master of Science (2005) and PhD (2020) in ABA from the Florida Institute of Technology (FIT). Ansley has had a variety of clinical work experiences, including founding an ABA-based school, running an early intervention clinic, and working with adults in group homes. For the last seven years, Ansley has served as Nemours Children's Hospital first lead behavior analyst with the goal of embedding behavior analysis in a hospital setting. At Nemours, she is part of a multi-disciplinary assessment team for children with complex medical conditions and intellectual disabilities; she also leads an ABA team in providing services to children and parents. As part of her role, Ansley uses ABA and OBM in training the administrative teams, medical residents, medical students, and other medical divisions on the utility and value of our science. Finally, she has published over 17 articles and book chapters and secured over \$4.5 million in grant funding.



continued on next page

Thursday Presentations *continued*

CHRISTINA TUCKER, MS, BCBA

Christine Tucker is a BCBA, Vice President and Lead Clinician for Strategies, Inc. providing services in home, schools and community to families with autism and special needs. With Strategies, the focus has been on expansion to service more families which has put us in 5 counties in Florida, throughout Maryland and soon California. As a 24 year provider in the field of ABA, Christine has served in several capacities and environments, including intensive behavior programs and APD LRC co-chair. Focused primarily on dissemination of ABA and development of other clinicians, current professional projects include supporting advocacy for licensure, seeking increased participation in FABA and ABA groups, and running for local government commission boards to build local business and civil service opportunities.



TAHRA CESSNA, MS, BCBA

Tahra Cessna is a BCBA and the Chief Operations Officer with Positive Behavior Supports Corp. An agency serving individuals with special needs in home, community, group home, and school environments. She is also the Co-Founder of the Treasure Coast Autism Project, a private, non for profit school for students on the autism spectrum. In her position as COO Tahra designs, implements, and oversees operations and company-wide strategies across 17 states and Canada and collaborates with multiple utilization management organizations, lobbyist, unions, and policy makers to support advocacy and best practice for the field of Applied Behavior Analysis.



CLAIRE A. LOTTMAN, MS, BCBA

Claire Lottman is a BCBA and the founder/CEO of Camen Behavioral Services, LLC, a clinic, community, and home-based agency providing ABA services to children and young adults in the greater Orlando and Kissimmee areas with clinics in Kissimmee, Metrowest Orlando, and Waterford Lakes (Orlando). Claire and her husband, David Lottman, founded the Camen Academy for the Performing Arts in 2019, a school focusing on providing behavior analytic and creative arts approaches to enhance a child's learning experience for grades K-12. As CEO of both companies, Claire continues to play an active role in the direct oversight and management of the school and clinical operations by maintaining customer service with the parents and families served, oversee and update organizational systems (such as onboarding of staff, documentation of services, payroll and benefit management, employee retention, curriculum development), and oversee the management directors, administration, and supervisors across the 3 clinic and school locations. Claire Lottman is a 2006 alumni of Florida Institute of Technology and has been an active practicing BCBA for the past 14 years. She is the proud mother of 3 boys and enjoys gardening on the weekends.



continued on next page

Thursday Presentations *continued*

YAISY SADE, MS, BCBA

Yaisy holds a Bachelor's in Psychology and a Master's Degree in Industrial Organizational Psychology from Carlos Albizu University. After coming across the field of ABA by chance and falling in love with it, Yaisy completed her post-graduate coursework in ABA at The Florida Institute of Technology where she received certification in December of 2014. As a Board Certified Behavior Analyst (BCBA), Yaisy has gained experience applying the concepts and principles of ABA with clients across the spectrum, ages 1-12, in various settings for the past several years. Some of these techniques include Discrete Trial Training, Verbal Behavior, Functional Communication Training, Positive Behavior Support, and Pivotal Response Training, among others. As an analyst fluent in Spanish, Yaisy is passionate about disseminating the science and providing ongoing training and support to the Spanish speaking autism community. Yaisy also continues to seek ongoing learning opportunities and training in the field of ABA via CEUs and further certifications.



1:00 - SUNGWOO KAHNG, PhD, BCBA-D - 1.0 BACB CEU, ETH & 1.0 MH/PSY CEs

SungWoo Kahng is an associate professor and Director of Academic Programs in Autism and ABA and Chair of the Department of Applied Psychology at Rutgers University. Prior to his current position, he was an associate professor at the University of Missouri (MU) where he was also the chair of the Department of Health Psychology, the Founding Director the MU Graduate Programs in Applied Behavior Analysis, and Director of the Applied Behavioral Intervention Service of the MU Thompson Center for Autism and Neurodevelopmental Disorders. Prior to moving to MU, he was a faculty member in the Department of Behavioral Psychology and a senior behavior analyst on the Neurobehavioral Unit at the Kennedy Krieger Institute as well as an associate professor in the Department of Psychiatry and Behavioral Sciences at the Johns Hopkins University School of Medicine. Dr. Kahng graduated from Kalamazoo College with a bachelor's of arts in psychology and received his PhD in behavior analysis from the University of Florida. He was an Associate Editor for the Journal of Applied Behavior Analysis where he also serves on the Board of Editors. Additionally, he is on the Board of Editors for Behavioral Interventions and has served as an ad hoc reviewer for numerous other journals. He is a Board Certified Behavior Analyst. Dr. Kahng is on the Board of Directors of the Behavior Analyst Certification Board and the Scientific Council of the Organization for Autism Research. Dr. Kahng is the recipient of the 2003 B.F. Skinner New Researcher Award given by Division 25 of the American Psychological Association. Dr. Kahng has co-authored over 80 peer reviewed articles and chapters. The focus of his research and clinical work has been on assessing and treating behaviors exhibited by individuals with developmental disabilities. He is also interested in a broader research agenda, which includes topics related to obesity and aging. Finally, he has mentored numerous undergraduate, master's level, and predoctoral students as well as post-doctoral fellows.



Conducting Functional Analyses is the Ethical Choice

Functional analyses of problem behaviors exhibited by individuals with ASD and related disorders is considered best practice. Yet, the majority of behavior analysts do not make this a regular part of practice, which may be a violation of the BACB's Professional and Ethical Compliance Code. In this presentation, we will discuss the ethical issues surrounding our implementation of functional analyses as well as perceived barriers to conducting functional analyses on a regular basis. These barriers will be discussed in relation to the available scientific evidence, which can be used to make a stronger argument for adoption in your organization.

Thursday Presentations *continued*

1:55 - SHAHLA ALA'I-ROSALES, PhD, BCBA-D - 1.0 BACB CEU & 1.0 MH/PSY CEs

Shahla Ala'i-Rosales received her BS from Southern Illinois University and her MA and PhD from the University of Kansas. She is an Associate Professor in the Department of Behavior Analysis at the University of North Texas and the director of the North Texas Autism Project (NTAP). NTAP is a service, training and research program working in cooperation with several global partners, with applied anthropologists, and with Easter Seals North Texas. Shahla teaches classes on ethics, autism intervention, parent training, applied research methods, and behavior change techniques. Shahla served on the governing board of the Behavior Analysis Certification Board (BACB) and as a subject matter expert on supervision and on ethics. She has published and presented research on ethics in early intervention, play and social skills, family harmony, change agent training, and evidence-based practice. Her research is applied and grounded in a commitment to love, science, usefulness, compassion, and integrity. She has trained hundreds of master's level behavior analysts who have gone on to serve families with honor. Shahla has over three decades of experience working with families, particularly those from varied cultural backgrounds. She travels and presents her work nationally and internationally to both professional and lay audiences. She was awarded an Onassis Foundation Fellowship for her work with families, was the recipient of UNT's student "Fessor Graham" teaching award, and received the Texas Association for Behavior Analysis Career Contributions Award in 2019.



Dialogues to Transform: Social Justice, Coloniality, and Behavior Analysis

The voice and inclusion of people of diverse cultural identities is expanding within the world and within our discipline. This expansion presents both tensions and possibilities. Ideally, applied behavior analysts should be developing increasingly more cultural responsiveness in all aspects of research and practice. That is not the case. Cultural responsiveness is closely yoked with lived experience, social justice, and the kyriarchy. The purpose of this presentation is to explore worldviews in the context of coloniality and to then relate this to our disciplinary and personal responses to power and efforts to contribute to a more socially just world. This includes consideration of global trends, womanist and determinist worldviews, material and spiritual values, justice and care ethics and the aims and history of our discipline. The presentation will close with a discussion of pathways to cultural responsiveness and social justice, with an emphasis on the roles of dialogues and reflective action within communities of practice.

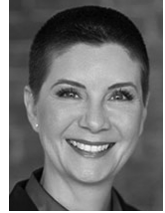
“the more radical the person is, the more fully he or she enters into reality so that, knowing it better, he or she can transform it. This individual is not afraid to confront, to listen, to see the world unveiled. This person is not afraid to meet the people or to enter into a dialogue with them. This person does not consider himself or herself the proprietor of history or of all people, or the liberator of the oppressed; but he or she does commit himself or herself, within history, to fight at their side.”

— Paulo Freire, *Pedagogy of the Oppressed*

Thursday Presentations *continued*

3:00 - TYRA SELLERS, JD, PhD, BCBA-D - 1.0 BACB CEU, SUP & 1.0 MH/PSY CEs

Tyra P. Sellers, JD, PhD, BCBA-D is the Director of Ethics at the Behavior Analyst Certification Board. She earned a B.A. in Philosophy and M.A. in Special Education from San Francisco State University, a J.D. from the University of San Francisco and a PhD from Utah State University. Her professional and research interests focus on professional ethics, training and supervision, assessment and treatment of severe problem behavior, variability, and verbal behavior. Dr. Sellers has over 20 years of clinical experience working with individuals with disabilities in a wide variety of settings. Tyra has served as a board member in various positions, for the Utah Association of Behavior Analysis. She currently serves on the editorial board for two journals.



Strategies for Incorporating Ethics Content into Supervised Fieldwork Experience

Individuals certified by the Behavior Analyst Certification Board® (BACB®) must comply with specific requirements, including adherence with the Professional and Ethical Compliance Code for Behavior Analysis, the RBT Code of Ethics, and accruing continuing education units specifically in supervision each renewal cycle. However, many behavior analysts receive little, if any, direct instruction on how to provide effective supervision and how to systematically incorporate ethics, in a functional manner, into the supervised training experience. This talk focuses on discussing the importance of, and strategies for taking a structured approach to incorporating ethics into the supervised fieldwork experience.

4:00 - Panel Discussion with AHCA, APD & CASP - 1.0 BACB CEU

Discussant: MARY RIORDAN, PhD, BCBA-D

Panelists will include representatives from the Florida Agency for Persons with Disabilities (APD), Agency for Health Care Administration (AHCA) and the Council of Autism Service Providers (CASP).



Providing Behavior Analysis Services During the COVID-19 Crisis and Beyond

This panel discussion will include senior representatives from APD, AHCA, CASP and APBA. They will provide a brief presentation from their perspective regarding the current status of behavior analysis service delivery, what limitations or reduction in requirements have been implemented, as well as new requirements or recommended practices for these services. There will be specific questions provided by the discussant to each agency representative as well as general questions to be responded to by the group. Time permitting, questions will be accepted from the audience through the chat function of the video conference.

5:20 - 7:00 Exhibit Booths Open

Take time to visit our virtual exhibit booths during this event. We are encouraging exhibitors to man their booths between 5:00-7:00, so if you would like to speak to someone live about their product or service, this would be the time to stop by.

Thursday Presentations *continued*

7:00 - Tropical Trivia

Join other FABa attendees for networking and trivia. Participants will work through rounds of trivia questions on FABa history, Behavior Analysis and general knowledge. To join the fun, just go to the BehaviorLive platform to find the link. Space is limited to 500 participants. Please join 5 minutes early so we can start on time.

Tropical Trivia


Thursday • September 17 • 7:00 PM

*Meet other attendees and
network... virtually!*

2020

40th Annual Meeting • A Virtual Event

*Please arrive 3-5
minutes early so we
can begin on time.*

 **zoom** 5.0 required



Friday Presentations

8:00 - KAREN TOUSSAINT, PhD, BCBA-D - 1.0 BACB CEU & 1.0 MH/PSY CEs

Dr. Karen Toussaint is an Assistant Professor of Behavior Analysis at the University of North Texas. Dr. Toussaint received her PhD in School Psychology from Louisiana State University and completed a postdoctoral research appointment at the University of Nebraska Medical Center's Munroe- Meyer Institute. Dr. Toussaint provides behavioral intervention services for children with autism at KFAC and specializes in the treatment of severe behavior disorders and early language acquisition. While at KFAC, she also conducts research evaluations related to improving clinical outcomes. Her research can be found in journals such as the *Journal of Applied Behavior Analysis* and *Behavior Analysis in Practice*.



A Comparative Evaluation of Functional Analytic Methods

An extensive amount of research in the functional analysis literature has demonstrated that problem behavior is often sensitive to individual contingencies. Yet, a growing body of research suggests problem behavior is sensitive to synthesized reinforcement contingencies. Researchers have conducted comparative analyses examining the correspondence between the two methods, but the results are inconsistent across studies (Fisher et al., 2016; Slaton, Hanley, & Rafferty, 2017). Additional research is needed to compare the outcomes of each approach to provide clarity. The purpose of the current study was to evaluate further the two methods: the individual-contingency functional analysis (FA) and the synthesized functional analysis (IISCA). We conducted each analysis with seven individuals who engaged in problem behavior. Results suggest that individual reinforcement contingencies maintained problem behavior for all participants. Subsequently, a function-based treatment reduced problem behavior by 90% for all seven individuals, suggesting the validity of the FA results. Finally, we assessed the reliability of test and control conditions generated by behavior analysts who listened to the caregiver interviews used to inform the IISCA. Overall, there was a moderate level of reliability across respondents.

9:00 - JON BAILEY, PhD, BCBA-D - 1.0 BACB CEU, ETH

Dr. Bailey received his PhD from the University of Kansas in 1970 and is currently Professor Emeritus of Psychology at Florida State University where he was on the graduate faculty for 38 years and produced a record 63 PhDs. He is currently Director of the FSU Panama City Master's Program in Psychology with a Major in Applied Behavior Analysis and teaches Ethics & Professional Issues, Skinner's Theory of Behaviorism, and Research Methods in ABA. He is a Board Certified Behavior Analyst, a Fellow of the Association for Behavior Analysis: International and the American Psychological Association, and Treasurer for the Florida Association for Behavior Analysis, which he founded in 1980. He was the Director of the ABA Master's Program at the FSU Panama City Campus for 20-years and is Director of the popular ABAEthicsHotline.com.



Assuring RBTs Follow Their Ethics Code: The Next Challenge for BCBA's

It is now widely known in the profession that Registered Behavior Technicians (RBTs) have their own ethics code but from the nature of the questions that are coming through the ABA Ethics Hotline it is not clear that they fully understand their responsibilities. Many seem totally unaware of their obligation to understand and promote, "the values and core principles of behavior analysis" (1.01) or to realize that if there is a conflict with their ethics code (e.g. requests or demands from the family) they need to report this to their supervisor, and document this concern and its resolution (1.05). A big requirement that is easily overlooked is their obligation to "follow through on

continued on next page

Friday Presentations *continued*

contractual commitments” (1.09), it is common, for example for RBTs to quit on a moment’s notice and leave their clients without services. I believe it is the responsibility of the BCBA supervisor to make sure that their RBT therapists are fully aware of their ethics code and to include reference to code items in their supervision and provide in-service training on common ethical scenarios. In this talk I will discuss and provide some examples of the most frequent ethical violations by RBTs and suggest some ways that BCBA’s can enhance their training in this most vital area.

10:00 - JENNIFER AUSTIN, PhD, BCBA-D - 1.0 BACB CEU & 1.0 MH/PSY CEs

Jennifer L. Austin, PhD, BCBA-D has been applying the science of behavior analysis to improve outcomes for children and their teachers for over 20 years. Both her research and clinical work focus on how behavior analytic assessment and intervention strategies can be applied with typically developing children, as well as examining what adaptations may be necessary for making our science “work” in mainstream classrooms. She has worked with numerous schools in the US and the UK, focusing primarily on those in disadvantaged communities. Dr. Austin received her PhD from the Florida State University and currently serves as Professor of Psychology and Head of Behavior Analysis at the University of South Wales. Prior to moving to the United Kingdom, Dr. Austin served as faculty at the University of South Florida, California State University, Fresno and the University of Houston, Clear Lake. She is the President of the UK Society for Behaviour Analysis and a former Associate Editor of the *Journal of Applied Behavior Analysis and Behavior Analysis in Practice*.



Common Mistakes Behavior Analysts Make When Working in Schools (and What to Do Instead)

Current statistics regarding problem behavior and academic attainment confirm that schools need behavior analysts more than ever. However, many schools that could benefit from our services do not know we exist (or have misconceptions about what we do). Further, our enthusiasm for helping schools enact meaningful changes in student and teacher behavior may cause us to miss some important contingencies that might impact our effectiveness as behavioral consultants. Drawing on work conducted at the University of South Wales, this presentation will identify some tips for “opening the school doors” for behavior analysis. It also will identify some common mistakes that behavior analysts make in schools, including such areas as functional assessment strategies, intervention planning and approach, and data collection. Importantly, it will provide some potential solutions to these problems, as well as identifying some interpersonal skills that might be useful in improving our efficacy in both mainstream and special education settings.

10:55 - YULEMA CRUZ, PhD, BCBA-D - 1.0 BACB CEU & 1.0 MH/PSY CEs

Dr. Yulema Cruz received a PhD in Education with a concentration in Applied Behavior Analysis from Nova Southeastern University. She is also a Board Certified Behavior Analyst-Doctoral with 19 years of experience in the field. Her academic interests include ethics and supervision in ABA, the latter of which was the topic of her dissertation. Besides from being an adjunct instructor for a couple of colleges and imparting classes in Spanish, Dr. Cruz is an ABA consultant and supervisor. Additionally, she works in the development of supervision systems, and the dissemination of ABA to other countries and languages. Dr. Cruz also provides ethical advice



continued on next page

Friday Presentations *continued*

in the area of supervision as part of the international <http://www.ABAethicshotline.com>. As FABAs President, she participates in the Program Committee, and co-chairs the Legislative and Political Action Committee.

Presidential Address - FABAs is Opportunity

This year's presidential address invites us to take a deeper look at the concept of opportunity from a behavioral perspective. Opportunity as a concept entails an instance when a particular situation sets the occasion for an individual to achieve something (Oxford, 2020). This presentation will highlight how behavior analysts may be considered "opportunity makers". Specifically, it will illustrate examples where the science of behavior has been used to create opportunities in various professional arenas and in the face of unexpected environmental challenges. Collaboration, growth and diversity, will be recurring themes within this presentation, as the we come together to celebrate FABAs 40th year of "building opportunities".

12:30 - Panel Discussion: Using ABA To Make The World Better

Lunch & Learn - 1.0 BACB CEU

During the past months we have observed an increasing awareness of social injustice and systemic racism following the continued murders of unarmed individuals of color. The events and subsequent protests have been observed across the nation and world at large. The field of Applied Behavior Analysis is tasked with the improvement of socially significant change and increasing awareness of social injustice and racism within society can be considered socially significant. Although social injustice and systemic racism can be identified as a social construct, both can be broken down into defined operational definitions. This panel will seek to operationally define racism in addition to evaluate the contingencies and behaviors that continue to reinforce this behavior. Additionally, this panel will identify and define behaviors that participants can engage in to combat racism and its effects across a multiplicity of settings (i.e., workplace, community, home).

There has been an increasing awareness of social unjust and racism that has been happening across the nation. Though identified as more social terms, both social unjust and racism can be broken down into defined operant behaviors. This panel will define racism, its contingencies, and behaviors that continue to reinforce the behavior of racism. This panel will also identify and define behaviors that participating audience members can engage in to combat racism and its effects in the workplace, community, and home.

Chair: **MARLESHA BELL, PhD, BCBA** (*University of the Pacific*, mbell@pacific.edu)

SHANEERIA PERSAUD, MA, BCBA (*United Behavior Analysis*,
shaneeria@unitedbehavioranalysis.com)

ARTHUR HAIRSTON, BCBA, M.Ed (*University of North Florida & TSI Health*,
a.hairston@unf.edu)

STEPHANIE BOLDEN, MA, BCBA (sbolden2017@my.fit.edu)

SHAWN T. CAPELL, MS, BCBA, LBA (*Covenant 15:16 LLC*,
shawncapell@covenant1516.org)

continued on next page

Friday Presentations *continued*

1:30 - ELLIE KAZEMI, PhD, BCBA-D - 1.0 BACB CEU, SUP & 1.0 MH/PSY CEs

Dr. Kazemi is a Professor at California State University, Northridge (CSUN) where she has developed and teaches undergraduate and graduate coursework in behavior analysis for the past 10 years. She founded the Masters of Science Program in Applied Behavior Analysis in 2010 and has collaborated with the CSUN community to provide graduate students high quality supervision experiences. She currently has two different lines of research. Her applied research interests involve identification of efficient, effective strategies for practical training, supervision, and leadership. Her laboratory research involves leveraging technology (e.g., robotics, virtual or augmented reality) for efficient training and feedback using simulations. She has received several mentorship awards including the ABAI Best Mentor Award, the Outstanding Faculty Award, the Outstanding Teaching Award, and the Outstanding Service Award. She has published articles and book chapters on a variety of topics including training, staff turnover, and the use of technology in behavior analysis. She is the lead author of a handbook written for both supervisors and supervisees that is titled, *Supervision and Practicum in Behavior Analysis: A Handbook for Supervisees*.



Creating and Maintaining a Culture of Care as Supervisors

Despite the importance of supervision, specialized training for it lags way behind. Supervisors, as leaders in their organization, are responsible for caring for their clients as well as for their personnel. In this talk, I will focus on how supervisors can create and maintain an organizational culture of care that would benefit their clients as well as their staff.

2:30 - BRIAN D. GREER, PhD, BCBA-D - 1.0 BACB CEU & 1.0 MH/PSY CEs

Brian D. Greer is the founding director of the Severe Behavior Program within the Rutgers University Center for Autism Research, Education, and Services. He is an assistant professor in the Department of Pediatrics and a core member of the Brain Health Institute. He received a Bachelor of Science in psychology from the University of Florida in 2008. Dr. Greer obtained a Master of Arts in applied behavioral science in 2011 and a PhD in behavioral psychology in 2013, both from the University of Kansas. He later completed a postdoctoral fellowship at the University of Nebraska Medical Center. He has served on the board of editors and as a guest associate editor for the *Journal of Applied Behavior Analysis* and the *Journal of the Experimental Analysis of Behavior*. He is the 2013 recipient of the Baer, Wolf, and Risley Outstanding Graduate Student Award and the 2019 recipient of the B. F. Skinner Foundation New Researcher Award in the area of applied research. Dr. Greer is the Executive Director of the Society for the Quantitative Analyses of Behavior, and he currently supervises three R01 grants from the National Institute of Child Health and Human Development on stimulus-control refinements of functional communication training and preventing relapse of destructive behavior using Behavioral Momentum Theory and Resurgence as Choice Theory. He has helped to acquire and carry out over \$10 million in federal grant funding.



On the Scope, Characteristics, and Mitigation of Treatment Relapse During Clinical Service Delivery

Relapse following effective behavioral intervention has received a fair amount of attention from applied researchers over recent years. A handful of applied studies have examined the prevalence of treatment relapse following changes in context (i.e., renewal) or a worsening in reinforcement

continued on next page

Friday Presentations *continued*

contingencies maintaining alternative responding (i.e., resurgence). Prevalence rates vary across studies, but all suggest that treatment relapse occurs with sufficient regularity during routine, clinical service delivery to warrant additional investigation. In this presentation, I summarize the results of a recent prevalence study in which we analyzed opportunities for renewal and resurgence across two clinical programs, one that specializes in the treatment of severe destructive behavior and another that specializes in the treatment of pediatric feeding disorders. I also provide findings related to the concomitant disruption in alternative responding during such treatment challenges and provide evidence that such deterioration in performance is (a) common within and across patients, (b) often involves both the recurrence of problem behavior and alternative response disruption, and (c) does not dissipate over time or with additional exposures to similar treatment challenges. Following this discussion, I provide preliminary data on promising relapse-mitigation techniques that warrant additional study.

3:35 - JEANNE DONALDSON, PhD, BCBA-D -1.0 BACB CEU & 1.0 MH/PSY CEs

Jeanne Donaldson earned her PhD in Psychology from the University of Florida and completed a postdoctoral fellowship at the Johns Hopkins University School of Medicine and the Kennedy Krieger Institute. Previously, she was an Assistant Professor in the Department of Educational Psychology and Leadership at Texas Tech University. Currently, she is an Associate Professor in the Department of Psychology at Louisiana State University. Her research focuses on solving problems common in early childhood and assessing child and adult (typically teacher) preference for interventions. She was the 2018 recipient of the B. F. Skinner Foundation New Applied Researcher Award from APA Division 25. She is currently an Associate Editor at the Journal of Applied Behavior Analysis and a member of the ABAI Science Board. She is a BCBA-D and Licensed Behavior Analyst in the state of Louisiana.



Is the Good Behavior Game Really as Good as it Seems?

The Good Behavior Game (GBG) is a class wide intervention first described over 50 years ago (Barrish et al., 1969) that consistently has proven effective at reducing disruptive behavior and increasing on-task behavior at every grade level and in classrooms across the country and worldwide. The GBG includes several key components: rules, teams, ongoing performance feedback, a criterion to win, and prizes for winners. All of these components are relatively flexible in how they can be arranged, allowing for customization to meet the needs of varying classrooms and teacher preferences. When teachers learn to implement the GBG, they learn foundational skills for changing behavior: setting clear behavioral expectations, delivering immediate feedback, and arranging reinforcement for appropriate behavior. For these reasons, the GBG is an ideal packaged intervention for behavior analysts to recommend to teachers. However, the GBG has recently come under scrutiny in a meta-analysis of randomized controlled trials of the GBG (Smith et al., 2019) for producing weaker effects than many researchers claim, particularly researchers using single subject designs. I will suggest some methodological differences that could account for these differences in findings and implore future GBG researchers to work across methodologies to reconcile these differences empirically.

Friday Presentations *continued*

4:30 - Special Event: Jon Bailey: 50 years of Ethics, Mentorship, and Behavior Analysis - 1.0 BACB CEU

FABA was founded in 1980 by a group of behavior analysts in the State of Florida who were passionate about the ethical and humane application of the science of behavior analysis throughout our state. One of those individuals was Dr. Jon Bailey, a professor at Florida State University who was not only a teacher, but a mentor to many through his research laboratory and applied work. While this year, 2020, is the 40th year of FABA – it's also the 50th year of Dr. Bailey's career at FSU. Over the past 50 years at FSU, Dr. Bailey graduated 63 PhD's and has mentored over 300 Master's students. In our field, there are many behavior analysts who have a connection to Dr. Bailey's academic tree, and this event will focus the many years of behavior analysis training that he led at FSU, which was a unique period of time in behavior analysis history.

For this special FABA event, a panel of behavior analysts, who received their PhD at FSU under Dr. Bailey, will reunite to share stories of their time in Dr. Bailey's lab, what they learned through his mentorship that impacted their successful careers in behavior analysis, and much more.

Panel members for this event include: Dr. Jennifer Austin, Dr. Jim Carr, Dr. Brian Iwata, and Dr. Matt Normand. A special invitee for the event is Dr. Jon Bailey.

Chaired by **AMY POLICK, PhD, BCBA-D**

Amy Polick is faculty at Florida State University and is the Associate Dean for Florida State University Panama City and Development Director for the FSU Early Childhood Autism Program (ECAP), which is a nonprofit ABA provider. She has been at FSU since 2010 and has served on the FABA executive committee since 2011. Dr. Polick has 15 years of clinical experience in ABA and her current passion is helping families affected by autism. Since joining ECAP, she has overseen annual fund-raisers for scholarships awarded to families for ABA services and has also led ECAP's expansion efforts, including the establishment of an on-campus autism clinic in 2012 and a Parent Resource Center which opened in the Fall of 2015.



JON BAILEY, PhD, BCBA-D

Dr. Bailey received his PhD from the University of Kansas in 1970 and is currently Professor Emeritus of Psychology at Florida State University where he was on the graduate faculty for 38 years and produced a record 63 PhDs. He is currently Director of the FSU Panama City Master's Program in Psychology with a Major in Applied Behavior Analysis and teaches Ethics & Professional Issues, Skinner's Theory of Behaviorism, and Research Methods in ABA. He is a Board Certified Behavior Analyst, a Fellow of the Association for Behavior Analysis: International and the American Psychological Association, and Treasurer for the Florida Association for Behavior Analysis, which he founded in 1980. He was the Director of the ABA Master's Program at the FSU Panama City Campus for 20-years and is Director of the popular ABAEthicsHotline.com.



continued on next page

Friday Presentations *continued*

DR. JAMES CARR, PhD, BCBA-D

Jim Carr received his PhD from Florida State University and currently serves as Chief Executive Officer of the Behavior Analyst Certification Board (BACB). In this important leadership role, he has advanced the status of applied behavior analysis and its parent discipline, behavior analysis, to new levels of visibility, acceptance, and respect. His professional service record is long and varied, comprising work on behalf of several state, national, and international behavior analysis organizations as well as some autism service programs and the BACB. In his role as a professor at the University of Nevada, Reno; Western Michigan University; and Auburn University, Dr. Carr has trained and inspired a cadre of professional behavior analysts, many of whom have established outstanding research and academic careers. Dr. Carr has also made sustained scholarly contributions to the field, with more than 100 articles in peer-reviewed journals both within and outside of behavior analysis. The majority of these articles report experimental evaluations of behavior analytic interventions designed to improve the functioning and quality of life for children and adults with developmental or acquired disabilities. He has also served on the editorial boards and as an associate editor of a number of leading behavior analysis journals, including the *Journal of Applied Behavior Analysis*, *The Behavior Analyst*, *The Analysis of Verbal Behavior*, and *Behavior Analysis in Practice*.



DR. BRIAN IWATA, PhD, BCBA-D

Brian Iwata received his PhD at Florida State University and is professor emeritus of psychology and psychiatry at the University of Florida. He has published more than 200 articles and chapters and has received over \$6 million in research grants to support that work. Dr. Iwata is the former editor of the *Journal of Applied Behavior Analysis* and past president of ABAI, Division 33 of the American Psychological Association (APA), the Florida Association for Behavior Analysis, the Society for the Advancement of Behavior Analysis (SABA), and the Society for the Experimental Analysis of Behavior. He has chaired study sections for both the National Institutes of Health and the National Institute of Mental Health and is a Fellow of the American Association on Mental Retardation (AAMR), the APA, and the American Psychological Society. Brian has received a number of significant awards for his work, including the D. F. Hake Award for Contributions to Basic and Applied Research, as well as the Award for Applied Research from APA, the Award for Distinguished Service to Behavior Analysis from SABA, and the R. B. Dillard Award for Excellence in Research from AAMR. Brian is just as much a teacher of researchers as he is a researcher himself: half of the recipients of the B. F. Skinner Award (APA Division 25) have been his former Ph students.



DR. JENNIFER L. AUSTIN, PhD, BCBA-D

Jennifer L. Austin, PhD, BCBA-D has been applying the science of behavior analysis to improve outcomes for children and their teachers for over 20 years. Both her research and clinical work focus on how behavior analytic assessment and intervention strategies can be applied with typically developing children, as well as examining what adaptations may be necessary for making our science “work” in mainstream classrooms. She has worked with numerous schools in the US and the UK, focusing primarily on those in disadvantaged communities. Dr. Austin received her PhD from the Florida State University and currently serves as Professor of Psychology and Head of Behavior Analysis at the University of South Wales. Prior to moving to the United Kingdom, Dr. Austin



continued on next page

Friday Presentations *continued*

served as faculty at the University of South Florida, California State University, Fresno and the University of Houston, Clear Lake. She is the President of the UK Society for Behaviour Analysis and a former Associate Editor of the *Journal of Applied Behavior Analysis* and *Behavior Analysis in Practice*.

DR. MATTHEW NORMAND, PhD, BCBA-D

Dr. Normand is a Professor of Psychology and Chair of the Psychology Department at the University of the Pacific. His primary scientific interests, broadly defined, are the application of basic behavioral principles to problems of social significance (including obesity and community health issues), verbal behavior, and the philosophy and methodology of science. He is the former Editor of *The Behavior Analyst*, a current Associate Editor for the *European Journal of Behavior Analysis*, former Associate Editor for the *Journal of Applied Behavior Analysis*, *The Behavior Analyst*, *The Analysis of Verbal Behavior* and *Behavior Analysis in Practice*, and he serves or has served on the editorial boards of *Behavioral Interventions*, *The Analysis of Verbal Behavior*, *Behavior and Philosophy*, and *Behavior Analysis: Research and Practice*. He also is a member of the Board of Directors of the Society for the Experimental Analysis of Behavior (SEAB). Dr. Normand is the 2011 recipient of the B. F. Skinner New Researcher Award from the American Psychological Association (Div. 25).



FABA's Statement on Sexual Harassment and Discrimination

FABA mandates that all participants, attendees, presenters, volunteers and associated professionals uphold the Behavior Analyst Certification Board's Professional and Ethical Compliance Code while promoting a culture where individuals can interact, benefit and contribute to the collective experience of the conference without fear of hostility.

FABA opposes any discriminatory, harassing or demeaning behavior as it violates the standards of our profession, opposes the mission of our organization, and surpasses polarized viewpoints or structured academic debate. Upon such an occurrence, FABA reserves the right to intervene in the form of ending an event or presentation and disconnecting the individual(s) from the virtual conference. FABA also reserves the right to opt out of reviewing future submissions or registration requests from individuals.

Save The Date

FABA

Looking Back at 40 Years of FABA

September 29 – October 2, 2021

JW Marriott Miami Turnberry Resort & Spa

19999 West Country Club Drive

Aventura, Florida 33180 USA

305-932-6200

Room Rate \$179



Discover luxury services, modern amenities and a stylish setting at JW Marriott Miami Turnberry Resort & Spa.

Elegantly designed, our spacious rooms and suites provide relaxing comfort with marble bathrooms and private balconies overlooking the resort's tropical grounds. Let

little ones join in days of fun at Tidal Cove Water Park while you lounge poolside in a private luxury cabana. Golf enthusiasts can vie for under par scores at our two 18-hole championship courses, while our exquisite full-service spa is a tranquil haven for beauty and wellness.



Comprehensive programs
and coursework in
applied behavior analysis

Registered Behavior
Technician™ Training
also available in Spanish

Board Certified Assistant
Behavior Analyst®
online course sequence

Board Certified
Behavior Analyst®
online course sequence

Type-2 CEs to maintain
BCBA® or BCaBA® certification



Uncover the possibilities
with *Florida Tech*

RBT® | BCaBA® | BCBA®
CEs | Exam Prep & More

Keep exploring at <http://aba.fit.edu/>

Sad to Miss the FABFA Store this Year?
Order Your Gear Here:

<https://fl-association-for-behavior-analysis.mybigcommerce.com>

Use code: **FRESHIPFABA** to get free shipping on your order!

Exp: 10/1/2020 One use per customer

Professional education with online flexibility

The Center for Behavior Analysis at the University of West Florida is a leading resource for individuals interested in ABA. UWF provides the complete pathway to develop your career—featuring an online ABAI-verified course sequence, RBT training, undergraduate and graduate coursework with degree offerings as well as continuing education courses.

Get started today!
Contact us at
850.474.2704,
aba@uwf.edu
or live chat at
uwf.edu/aba.

Follow @UWFABA on



uwf.edu/aba



Center for
Behavior Analysis
UNIVERSITY of WEST FLORIDA

ABA **SOLUTIONS**

ABA Solutions is seeking experienced and caring BCBAs, BCaBAs, and RBTs to join our team of amazing professionals helping children and adults throughout West Florida, Central Florida, and New Jersey.

We work with clients of all ages and abilities in a variety of settings including family homes, community settings, group homes, clinic, and public and private schools.

Our agency strives to provide quality services to families and also provide an open and caring work environment where all of our providers are valued and work together as a team.

We look forward to hearing from you!

**7777 131st Street North, Suite 7
Seminole, FL 33776**

T: 727-492-5369 | F: 727-350-3255



ABA Online

ABA Online is a robust partnership between **ABA Technologies, Inc.** and **Florida Tech**. After two decades of providing top-notch, on-campus behavior analysis education, Jose Martinez-Diaz, Ph.D., BCBA-D started ABA Online to provide training worldwide.

As the largest provider of online behavior analytic coursework, Florida Tech ABA Online students consistently score well above the national average on BCaBA and BCBA exams. ABA Online at Florida Tech is internationally recognized for its excellence in preparing preservice and practicing behavior analysts.

As the Authorized Continuing Education provider, ABA Technologies, Inc., in partnership with Florida Tech, offers hundreds of continuing education courses presented by the field's leading experts. Our BACB continuing education offerings address areas of clinical practice, conceptual work, behavior-business, and more. Additional CEs relevant to parents, educators, psychologists, allied health providers, counselors, and business leaders are available online.

IMPROVING LIVES THROUGH THE SCIENCE OF BEHAVIOR

abafit.edu | abatechnologies.com





Develop tomorrow's leaders in behavior analysis today

Capella University helps you bring positive change to the lives of individuals through certificates and bachelor's, master's, and PhD programs in behavior analysis. Our flexible, affordable programs meet the academic requirements of the Board Certified Behavior Analyst® certification and Board Certified Assistant Behavior Analyst® examination. Students graduate prepared to take the appropriate exam and use what they've learned to help clients.



Professionally aligned, ABAI verified

This coursework sequence has been verified to meet the coursework requirements for eligibility to take the Board Certified Behavior Analyst® examination and the Board Certified Assistant Behavior Analyst® examination. Applicants will have to meet additional requirements to qualify.



es.capella.edu/faba20



888.227.9896

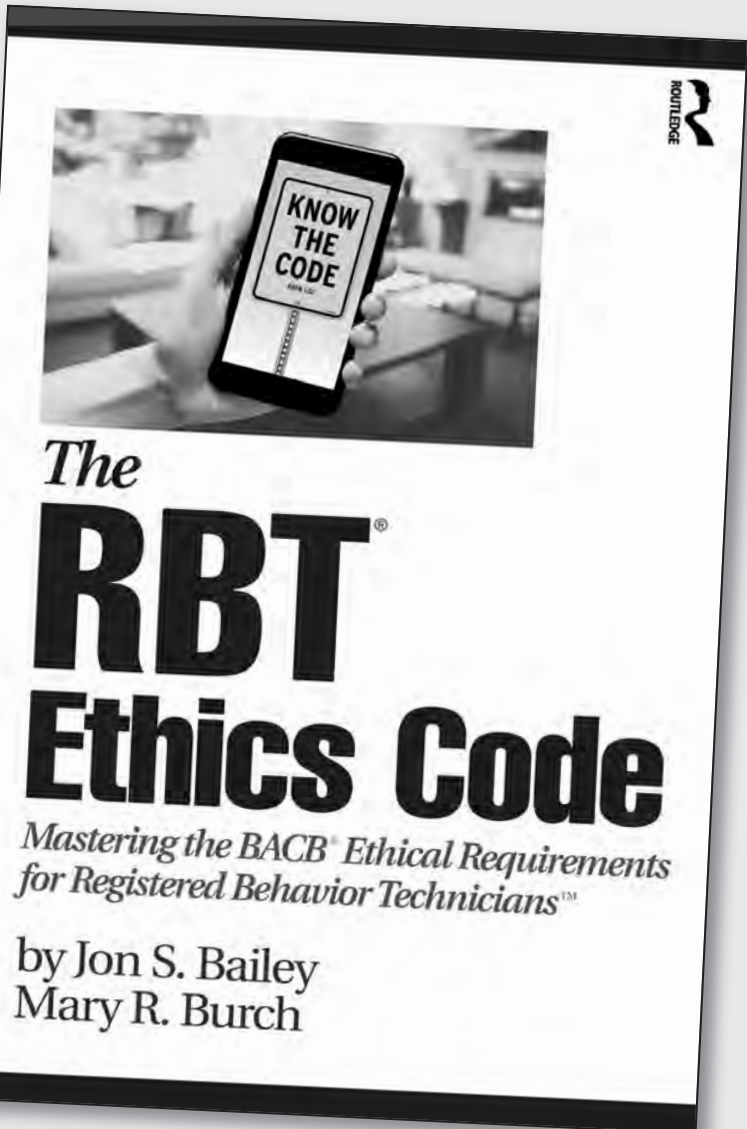
Accreditations: Capella University is accredited by the Higher Learning Commission.

Higher Learning Commission: <https://www.hlcommission.org>, 800.621.7440

Capella University: Capella Tower, 225 South Sixth Street, Ninth Floor, Minneapolis, MN 55402

1.888.CAPELLA (227.3552) © 2020 Capella University 20-2129

Now Available at
Amazon.com



Association of



*Professional
Behavior Analysts*

The Association of Professional
Behavior Analysts
congratulates our Affiliate FABA
on its 40th conference!

ATTENTION FABA MEMBERS:

More than ever, our field needs strong organizations at every level to advocate for public policies to protect behavior analysts' right to practice and arrange funding for ABA services. As the only international professional organization dedicated exclusively to the practice of ABA, APBA has been doing that for over a decade. Please support those and other efforts on behalf of ABA practitioners and consumers by joining TODAY! Dues are very reasonable and bring great benefits:

- **Discounts** on professional liability insurance, subscriptions to *Current Contents in ABA* and several journals, books from Springer Publishing Company, job ads and other products in the APBA Career Center
- Access to valuable **resources** on the APBA website (back issues of the newsletter; information on health insurance coverage of ABA services; materials on professional credentialing of ABA practitioners; results of APBA surveys; bibliographies of applied research; contract and consent forms; and more)
- Access to expert **advice** on many aspects of practice
- Reduced registration, workshop, and CEU fees at the annual APBA **convention**
- Reduced fees for APBA **webinars**, including recorded webinars on telepractice of ABA, COVID-19 employment law, essential legal info for health insurance providers, and behavior analysts and racism
- **Updates** on important developments in the practice of ABA
- BACB Certificant members also have the opportunity to **nominate and vote** on candidates for the APBA Board of Directors.

Click Membership or JOIN NOW at www.apbahome.net

THANK YOU to Our Sponsors



THANK YOU to Our Sponsors

RELIAS



PROVEN PROGRESS

DATA
ENTRY

PROVEN
CURRICULUM

ACE[®]

ABA Software
System

The Very Best ABA Software

Free Trial

A product of



The New England Center
for Children[®]
Autism Education and Research

508-658-7555
acenecc.org